

**AMENDMENTS TO BOOKLETS 90 AND 92
(S4082 Tape Reader Units)**

Note: The following amendments apply to Model 90, 5-Wire Keyboard Tape Verifier, and Model 92, 5-Wire Tape Reader, when fitted with S.4082 Tape Reader Unit.

This T.I.S. cancels T.I.S. 61 (December, 1957).

Amendment No. 1

On the cover and title page of Booklet 92, delete "S.3921" and insert "S.4082".

Amendment No. 2

On page 1 of Booklet 92, replace the Introduction with the following new Introduction:-

"The instructions in this Booklet apply to both the Model 92, 5-wire Tape Reader, and the S.4082 Tape Reader Unit.

The Model 92 Tape Reader is supplied as an independent machine; the S.4082 Tape Reader Unit, which lacks the cover and Feed Alarm device, is for incorporation into other apparatus."

Amendment No. 3

On page 1 of Booklet 92 and page 5 of Booklet 90, delete Adjustment 1 and insert the following new adjustment:-

"1. Tape Retaining Plate (Figs. 1A and 2A)

Check

- 1.1 With the tape retaining plate C closed, check that the tips of the reading levers are in the same vertical plane as the centre line of the tape roller B, and that they are positioned centrally with respect to the corresponding slots in the roller.

Action

- 1.2 Adjust, if necessary, by slackening screws G and moving the retaining plate C until the correct position is obtained. Tighten screws G.

Check

- 1.3 Place a screwdriver between the main plate and the reading levers so that the latter are held down below the surface of cover plate D. With the levers thus held clear, and with the tape retaining plate C closed, check that tape roller B clears cover plate D by .007 - .009 in. (.18 - .23 mm.), i.e. dimension 'aa', Fig. 2A.

T.I.S. No. 72

Page 2/6

(Issued November 1958)

Action

1.4 To adjust, slacken the locknut of stop screw H and turn the latter until dimension 'aa' is set up. Clamp stop screw H with its locknut.

Check

1.5 With the tape retaining plate C lowered, check that the latch J just engages freely onto catch screw K.

Action

1.6 If this is not so, adjust catch screw K to achieve the required condition."

Amendment No. 4

On page 1 of Booklet 92 and page 6 of Booklet 90, delete 2.2 and insert the following new adjustment:-

"Action

2.2 If necessary, slacken screws A, Fig. 4A, and adjust the position of the bearing blocks C to satisfy this condition. Tighten screws A."

Amendment No. 5

On page 2 of Booklet 92 and page 6 of Booklet 90, delete 3.1 and insert the following:-

"Check

3.1 Check that the roller on detent lever J, Fig. 5, is positioned so that the peckers rise centrally in the message holes of the tape."

Amendment No. 6

On page 2 of Booklet 92 and page 6 of Booklet 90, delete adjustment 4.3 and insert the following:-

"Action

4.3 If either of these conditions is not satisfied, slacken screws A, Fig. 4A, until bearing blocks C are friction tight and reposition the blocks until both requirements are met. Tighten screws A and recheck adjustment 2."

Amendment No. 7

On page 3 of Booklet 92 and page 8 of Booklet 90, delete the "note" immediately following adjustment 8.2.

Amendment No.8

On page 3 of Booklet 92 and page 8 of Booklet 90, Adjustment 9.1, delete letter "F" and insert letter "E".

Amendment No.9

On page 4 of Booklet 92 and page 9 of Booklet 90, Adjustment 10.1, delete ".028 - .030 in. (.71 - .76 mm.)" and insert ".024 - .027 in. (.61 - .69 mm.)".

On Fig. 9, dimension 'g', delete ".028 - .030 in. (.71 - .76 mm.)" and insert ".024 - .027 in. (.61 - .69 mm.)".

Amendment No.10

On page 4 of Booklet 92 and page 9 of Booklet 90, after Adjustment 10 and before Adjustment 11, insert the following new adjustment:-

"10A. Tape-Out Lever Height (Fig.9)

Check

10A.1 Open the tape retaining plate and check that the tape-out lever projects .028 - .034 in. (.71 - .86 mm.) above the surface of the cover plate. (This is similar to dimension 'g', Fig. 9).

Action

10A.2 Adjust the height of the tape-out lever by slackening its respective screw R and turning screw S. When the correct position is obtained, tighten screw R."

Amendment No.11

On page 6 of Booklet 92 *only*, after Adjustment 17, add the following new adjustment:-

"18. Feed Alarm Brush (Fig. 12) (when fitted)

Check

18.1 With perforated tape in the machine, check that the tip of brush C, Fig.12, lies centrally in the tape feed hole.

Action

18.2 If this is not so, slacken screws A until block D is friction tight and adjust the block to satisfy this condition. Tighten screws A.

T.I.S. No. 72

Page 4/6

(Issued November 1958)

Check

18.3 Check that the brush tip is deflected $\frac{1}{16}$ in. (1.6 mm.) when the tape gate is closed.

Action

18.4 If necessary, slacken screw B and re-position the brush in block D to give the required deflection. Re-check adjustment 18.1."

Amendment No. 12

In Booklet 90 and Booklet 92, delete Figs. 1, 2 and 4 and replace by Figs. 1A, 2A and 4A respectively.

In Booklet 92 *only*, after Fig. 11, insert attached new Fig. 12.

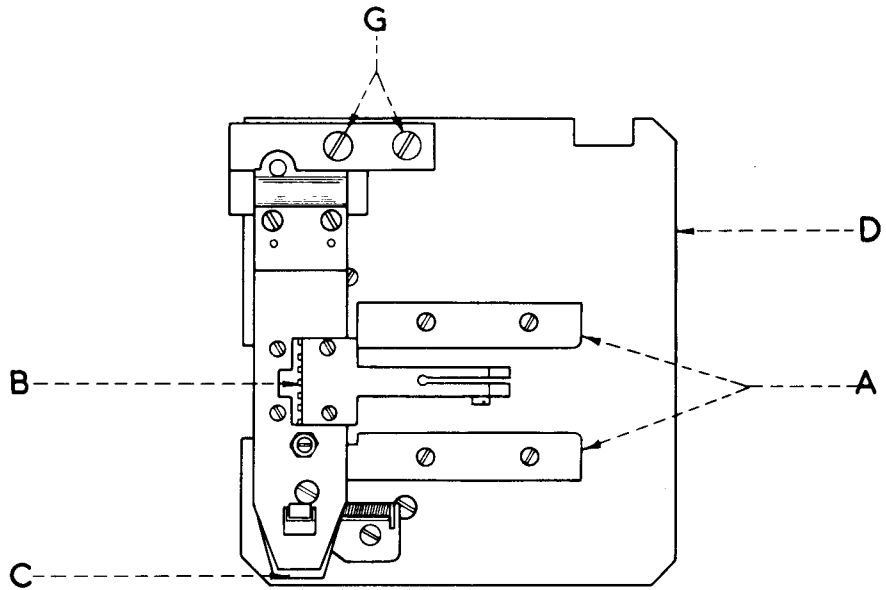


FIG. 1a .

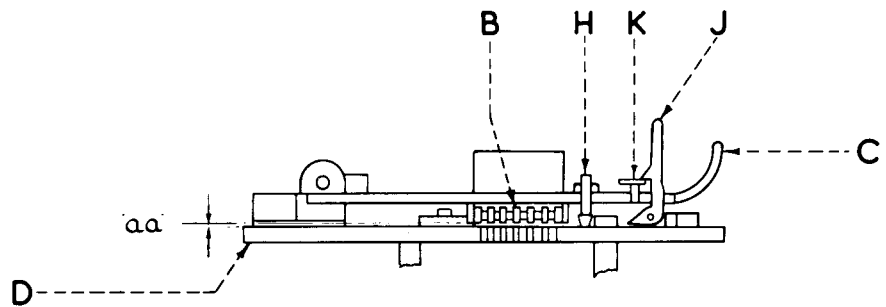


FIG. 2a

DIMENSION

$$'aa' = \begin{cases} .007-.009 \text{ in.} \\ .18-.23 \text{ mm.} \end{cases}$$

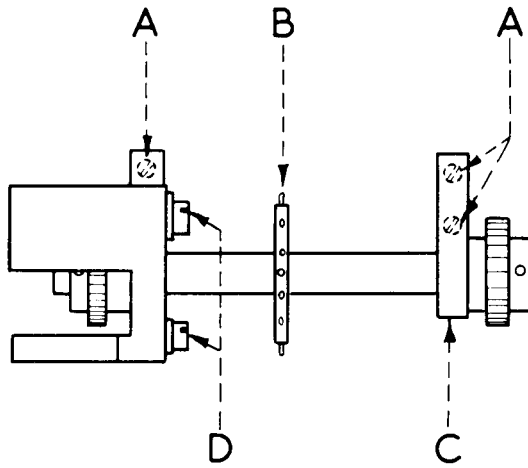


FIG. 4a

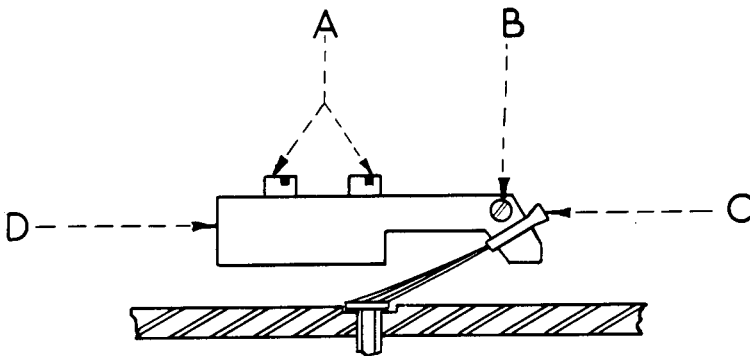


FIG. 12